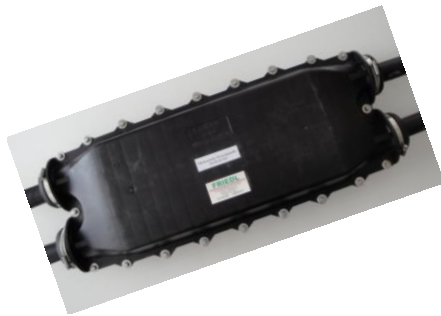
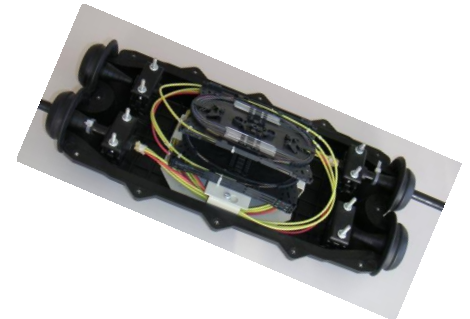


MKM 23, 42		Chapter 6	Datum: 07. März 2019	Fr/Hu
------------	--	-----------	----------------------	-------



## Datasheet MAM 23-200 MAM 42-320 Distribution Closure



**General:** This product is developed to connect and distribute cables with a wide range of diameters. The closure is used mainly for telecommunication and electric power cables, supporting all copper and optical fibre cables.

### Material description

**Usage:** outdoor predom. in soil; indoor in distribution rooms/racks, installation ready.

	MAM 23-200	MAM 42-320
Dimension: L/W/H	470/223/104	673/274/148
Material	Polypropylen black	Polypropylen black
Cable entries	4x 8-23 mm	4x 8-42 mm
Usage with twin glands	8x 7-12 mm	4x 7-12 mm+4x 7-22 mm
Free space for splices	200 mm	320 mm
Pull reliefs	4	4
Temperature range	-30° bis +80° C	-30° bis +80° C
Durability test	0,6 bar, steel bullet 1 kg height 1 m	0,6 bar, steel bullet 1 kg height 1 m
Reopenable	12 stainless bolts w. washer, 4 hose clamps	20 stainless bolts w. washer, 4 hose clamps
Proof tests	IP 68, ÖVE	IP 68, ÖVE
Certificates	VAEE 35443 (68/3/14)	VAEE 35443 (68/3/14)
designed also for fiber optic cables		
Splice tray capability	max. 5, 120 splices	max. 11, 264 splices